

LOADING APPLICATIONS INTO AUTOCAD 2002

Alireza Parsai / cad_tips@yahoo.com / October 2002

AutoCAD benefits from an open architecture. Open architecture means the user ability to customize AutoCAD environment, features, and commands. Users are allowed to create third party applications that can be loaded into AutoCAD. Such applications normally add new features and/or commands to AutoCAD. You can even define new menus and toolbars.

There are several methods to create AutoCAD acceptable applications. Amongst them AutoLISP/VLISP applications are the most popular ones. In general you might receive applications created in the following formats:

- ❖ AutoLISP® (.lsp)
- ❖ ObjectARX™(.arx)
- ❖ VBA (.dvb)
- ❖ ObjectDBX™(.dbx)
- ❖ Fast Load AutoLISP (.fas)
- ❖ Visual LISP™ executables (.vlx)

All such files can be loaded in AutoCAD 2000, 2000i, and 2002. There are several methods for loading these files. The most general one is by use of APPLOAD command. The command uses a dialog box and is a very user-friendly method for loading applications temporarily or permanently.

Invoke APPLOAD by entering **AP** in command line or selecting *Load Application* option from *Tools* menu.

When you invoke APPLOAD the *Load Application* dialog box appears [Figure1]. The dialog box consists of several sections. Let's discuss them.

Look in drop down list: The list helps you in browsing your computer or local area network for files and folders.



: It takes you to the last folder visited in *Look in* drop down list.



: The button is used to reach one level up the current folder.



: You can create a new folder by clicking this icon.



: Click this button to select the method of showing icons in the main list. The available options are: Large icons, Small icons, List, Details, Thumbnails.



: Searches the web for applications.



: Looks in Windows Favorites for the folder or file.



: Adds the selected folder or file to Windows Favorites. This helps you to access the folder or file easily in AutoCAD and other applications.

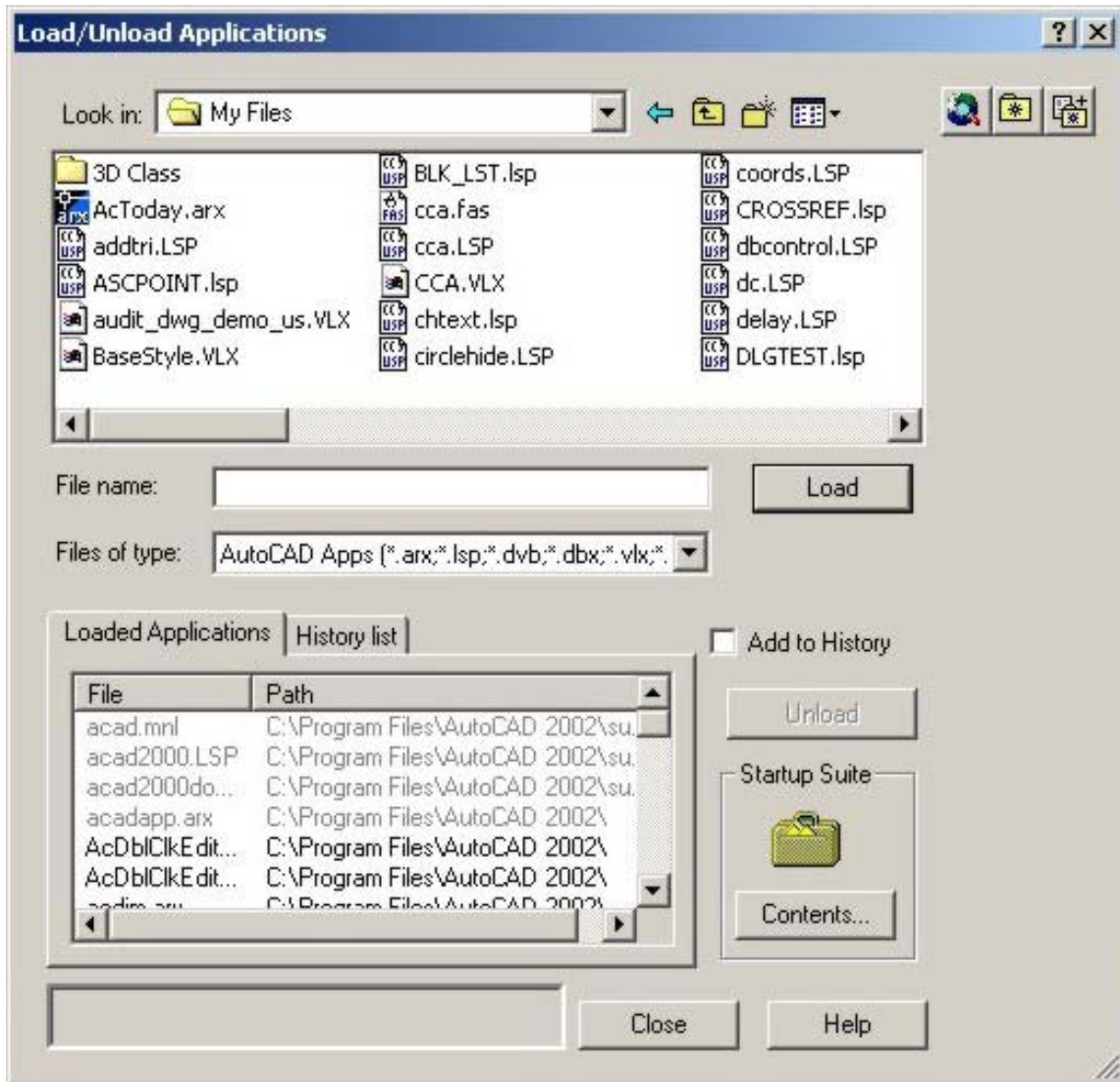


Figure 1



: After selecting the file click this button to load the application into AutoCAD. Later you can click *Close* button to exit *Load Application* dialog box and start using application. If you select a DVB, DBX, or ARX file it will be loaded immediately, but LSP, FAS, and VLX files are queued and loaded after closing dialog box.

If the file is loaded previously, it will be reloaded. This is not true for ObjectARX files. If you want to reload these files you should unload them first.

Load button is applicable for applications that are selected in the main list and History list, or those that are addressed directly within the *File Name* text box.

If you select a file in *History List* you can also right-click and select *Load* to load that file.



: Unloads the application. Select the application from *Loaded Applications* list and then click this button. If the application is grayed out, it cannot be unloaded.



: This button belongs to *Startup Suite* section. If you are using an application quite often then you may need to load it automatically. This will guarantee the presence of application in every drawing session. Startup Suite is used to fulfill this task.

Click *Contents* button in *Startup Suite* to view *Startup Suit* dialog box [Figure 2].

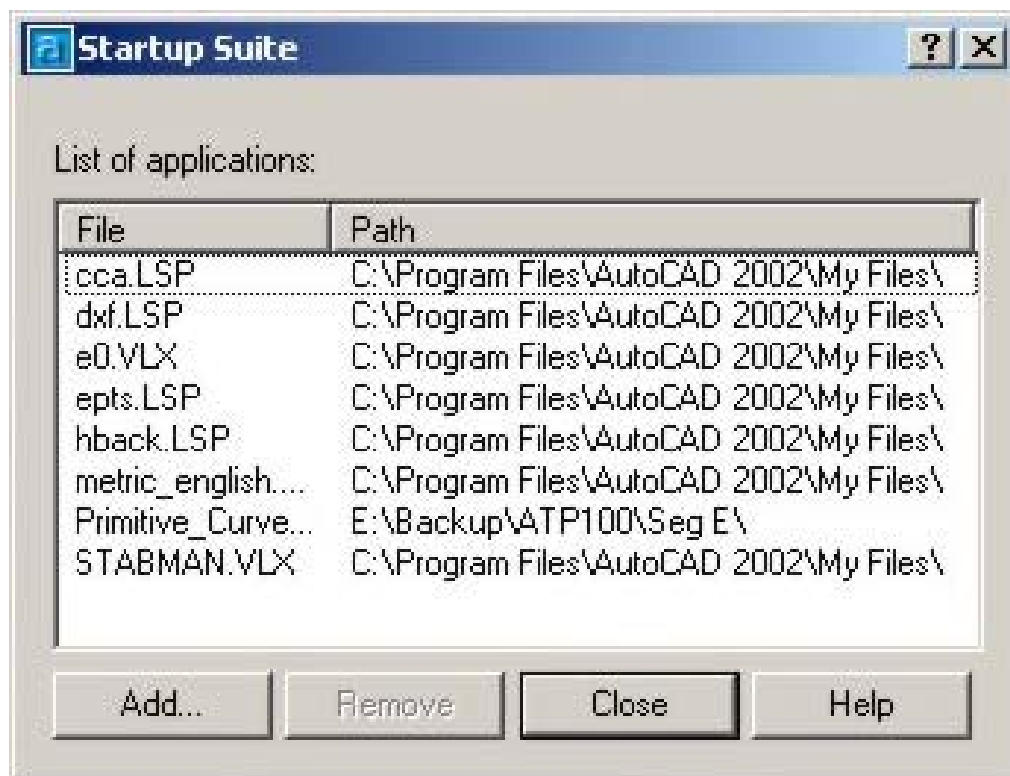


Figure 2

Click *Add* button to view *Add File to Startup Suite* dialog box [Figure 3]. The dialog box helps you to browse and add new applications to the list.

The applications that you add are also loaded in the current session. If you add an application it is loaded automatically when you start AutoCAD, or open a new file.

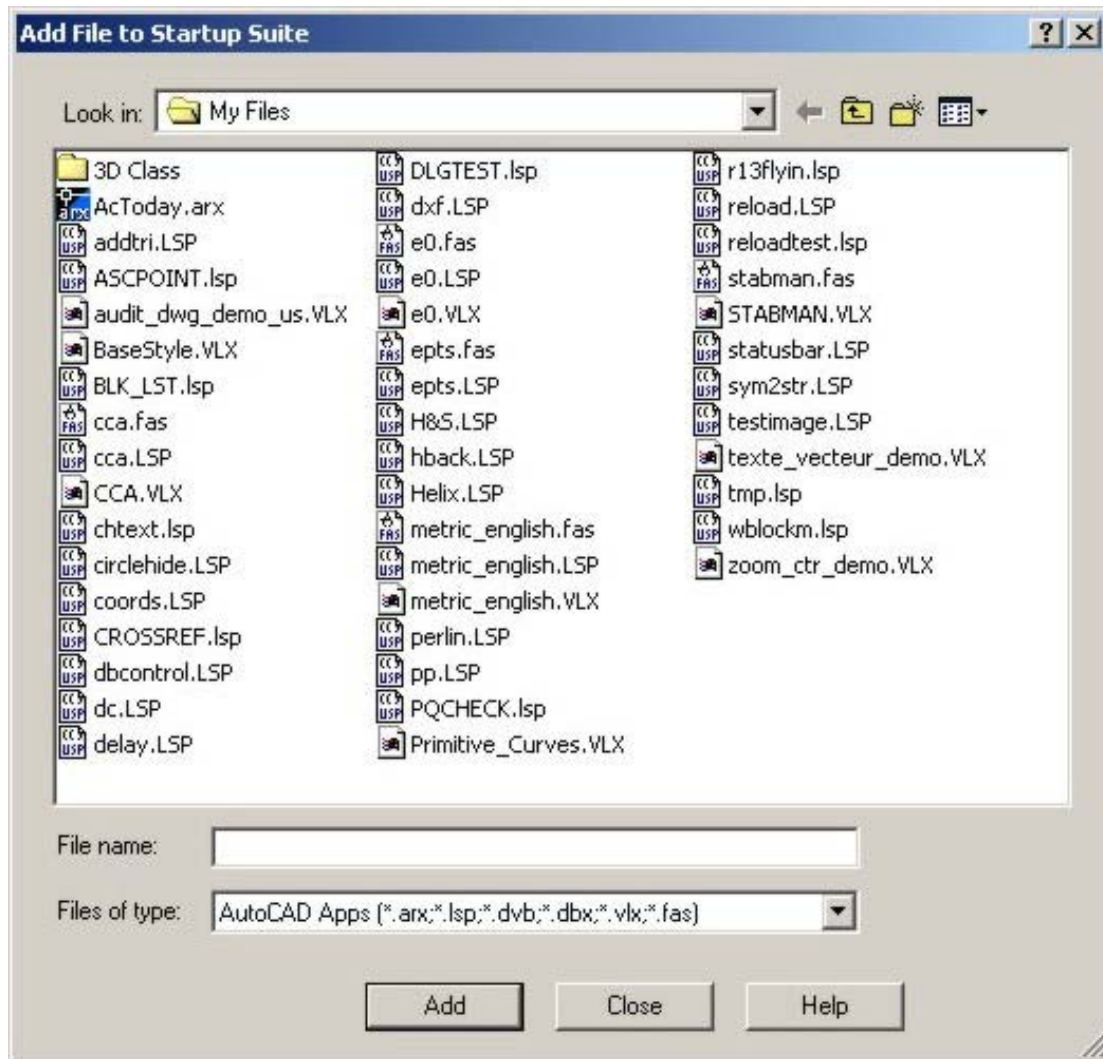


Figure 3

Add to History: Select this option to add the loaded application to *History list*. This list is a shortcut to find applications easily. Some applications are needed in many drawing sessions but you do not like to load them automatically. Add such applications to *History List*. To manage the list you can right-click in the list area and choose a proper option from the menu [Figure 4].



: Use this button to remove a file from *History List*. This button will not unload the file and just removes the name of the file from the list.

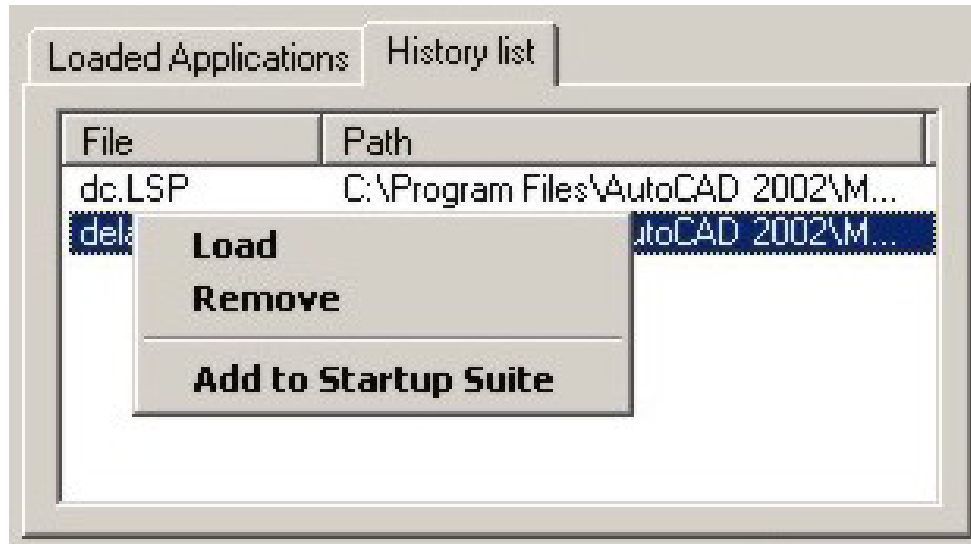


Figure 4

EXAMPLE:

Download **primitivecurves.zip** from http://www.geocities.com/cad_tips/downloads.htm. (The file is located under *AutoLISP Programs* topic and the name of the link is: [Draw circles, ellipses, arcs, and elliptical arcs with a single dialog box \(PC\).](#))

Extract the file into AutoCAD Support folder or any folder within AutoCAD search path. The application consists of 6 files. The one that you should load is called *Primitive_Curves.VLX*. Load this file to generate a command named PC. If you invoke PC you will view a dialog box to draw primitive curves in AutoCAD [Figure 5].

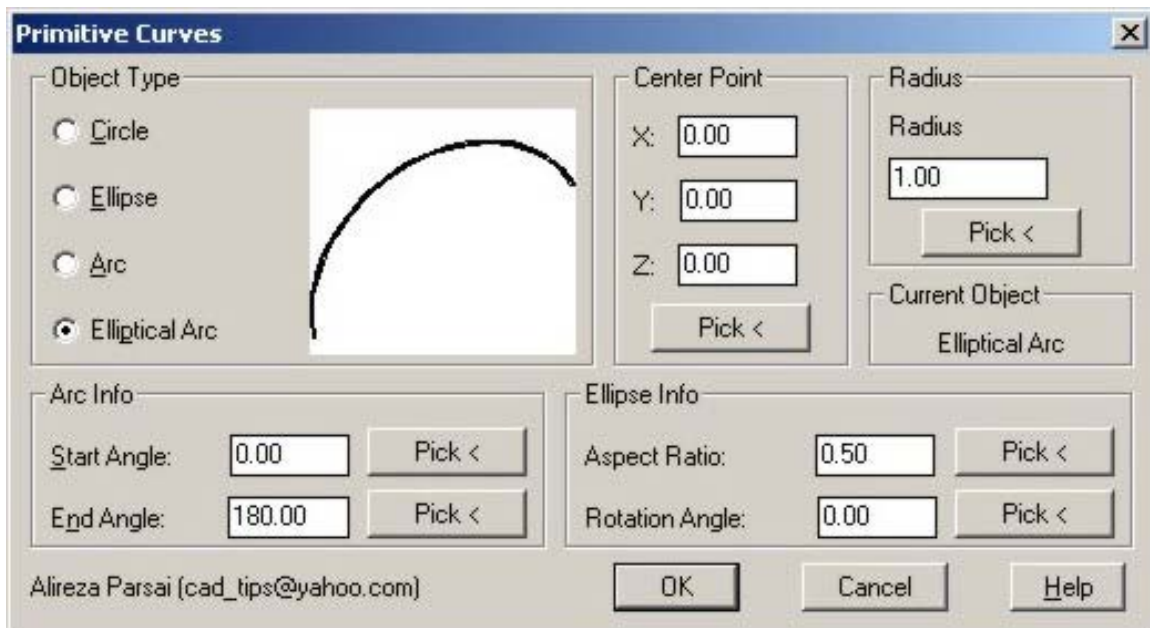


Figure 5